

Advantages of Ground Outdoor Base Stations



✓ IP65/IP55 OUTDOOR CABINET

✓ ALUMINUM

✓ OUTDOOR ENERGY STORAGE CABINET

✓ OUTDOOR MODULE CABINET



Overview

Generators, extension cords, and spider boxes can cause tripping and other safety hazards, but the Outdoor Ground Box is safely tucked right into the ground. Other outdoor power solutions can be. Used by Google Analytics to collect data on the number of times a user has visited the website as well as dates for the first and most recent visit. In some cases, the receiver may also be connected by an Ethernet cable to the Internet (either through the SNM920 radio or a router), so that it can be monitored. The Outdoor Base Station Cabinet is a robust and weatherproof telecom cabinet engineered to house communication, power, and battery equipment in outdoor environments. Traditional power solutions expose issues such as space occupation, complex interfaces, poor.

Advantages of Ground Outdoor Base Stations



[Bringing The Indoors Out: The Ultimate Guide to Outdoor Power and](#)

Bring safe, permanent power outside with outdoor ground boxes and charging stations. Promote longer stays, better productivity, and an optimal outdoor experience at higher education campuses, offices, ...

[Energy performance of off-grid green cellular base stations](#)

Although the base stations of next-generation mobile networks (e.g., 4G/5G/6G mobile networks) are designed to be energy efficient, the dense and large-scale deployment of these base ...



[Optimization of 5G base station deployment based on quantum ...](#)

We select suitable candidate locations for building base stations on the ground and rooftop, and set restrictions on the height of base station towers. The use of existing base station ...



[Assessing the Benefits of Ground Vehicles as Moving Urban Base ...](#)

In this paper, we propose a stochastic geometry framework for the characterization of the potential benefits of the MN paradigm as part of an HetNet in urban settings.



5 Years warranty



[Soetek's Highly Integrated Telecom Power System Solves Outdoor ...](#)

In contrast, Soetek's outdoor power base station solution reduces the installation and debugging time by nearly 40% per station, while failure rates drop by over 60%. Its excellent lightning ...

[Common ways to set up a base station](#)

A semi-permanent or permanent base station helps to eliminate the types of error that can result from repeated daily setups, and ensures that you always use the GNSS antenna at the exact original ...



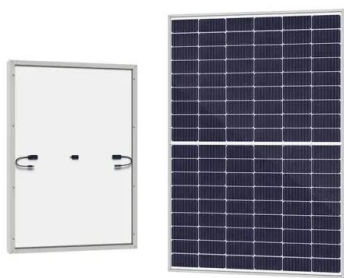
[Outdoor Base Station Cabinet](#)

Designed for long-term reliability, it provides a controlled and secure enclosure that ensures stable operation for base stations, transmission nodes, and edge network systems exposed to demanding ...



[What You Should Know About High Power Base Stations](#)

High Power Mobile Base Stations are advanced wireless communication systems designed to handle the rugged demands of construction sites. Offering robust signals, expansive ...



[Assessing the Benefits of Ground Vehicles as Moving Urban ...](#)

In a MN, some small cell base stations (BS) are installed on top of vehicles, and enable a more dynamic, flexible and sustainable, network operation.

Embrace the outdoor

In conclusion, choosing outdoor base stations in PMR/LMR networks provides strong reasons to do so, including cost savings, seamless operation, georedundancy, enhanced protection, streamlined ...



Contact Us

For catalog requests, pricing, or partnerships, please visit:
<https://www.xraydiamondsolutions.co.za>