

Double-glass shingled photovoltaic panels



Overview

Glass-glass PV modules, also known as double glass solar panels, are photovoltaic modules encapsulated with tempered glass on both the front and back sides. Compared to traditional glass-backsheet modules, they offer greater durability and environmental resistance. Bluesun's 610W and 720W shingled panels utilize high-efficiency N-type TOPCon cells combined with 4. By utilizing advanced shingled cell technology, this module. Panel dimensions: 2384 × 1096 × 30 mm; weight: 40 kg. Includes IP68-rated junction box, anodized aluminum alloy frame, and robust double-glass build for enhanced longevity and resilience Certified to meet CE, TUV, and IEC standards; protected with a 30-year linear power warranty—ensures long-term. In the ever-evolving world of solar energy, Dual-glass solar panels with shingled technology are making waves. This innovative technology is revolutionizing the way we harness the sun's power, offering a more efficient, durable, and aesthetically pleasing solution to traditional solar panels. The dual-glass structure provides.

Double-glass shingled photovoltaic panels



[Double the strengths, double the benefits](#)

In the ever-evolving world of photovoltaic technology, double glass solar modules are emerging as a game-changer. By encapsulating solar cells between two layers of glass, these modules offer unparalleled ...

[Shingled Solar Panel, Full Black Solar Panel, Commercial Solar Panel](#)

- o Perc Shingled Technology with high efficiency.
- o Superior Temperature Coefficient.
- o Built tough and tested under harsh conditions.

Higon off-grid high quality solar modules are particularly designed for solar power ...



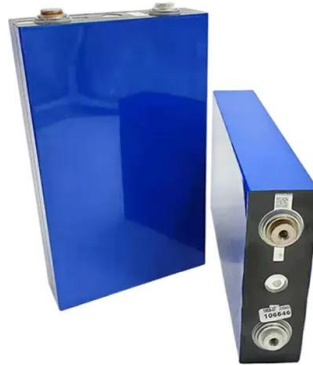
[600W Shingled Solar Panel - High-Efficiency Mid-Cut Monofacial ...](#)

Utilizes shingled cell architecture with N-type monocrystalline and PERC, offering outstanding conversion efficiency, bifacial energy capture, and rugged double-glass construction



[Bluesun 670w Bifacial Double Glass Solar Panel](#)

Compared with the normal module technology, the interconnected material of shingled module is different from that of normal module, whose technology is simpler and more reliable, avoiding the defects such as deviation ...



[The Evolution of Solar Panels Introducing Dual Glass and Shingled Mono](#)

With the increasing demand for renewable energy sources, the solar industry has constantly evolved to provide innovative solutions. In the realm of photovoltaic solar panels, recent advancements have led to the ...



[Dual-Glass Solar Panels with Shingled Technology](#)

Discover the revolution in solar energy: dual-glass solar panels with shingled technology. Efficiency, durability, and aesthetics combined.



[Double Glass All Black Shingled Solar Modules 158.75mm cell](#)

Raytech as a manufacturer and supplier of high-quality double glass solar panel, solar module, and solar panel, provide you with high-quality products and solar module customization service.



[2025 Complete Guide to Glass-Glass Solar Panels: The Top Choice for](#)

Compared to traditional glass-backsheet modules, they offer greater durability and environmental resistance. The dual-glass structure provides enhanced protection for solar cells against moisture, corrosion, ...



[720W Dual Glass Shingled Solar Panel , High-Power Low-Shading ...](#)

High-power 720W dual glass shingled solar panel featuring reduced shading loss and enhanced durability, ideal for utility-scale and large commercial PV projects.



[2025 Guide to Dual-Glass Solar Modules: When Premium Panels ...](#)

Complete guide to dual-glass solar panels: applications, benefits, costs & limitations. Learn when this premium technology provides genuine value vs conventional panels.



Contact Us

For catalog requests, pricing, or partnerships, please visit:
<https://www.xraydiamondsolutions.co.za>