

Energy storage cabinet combustible gas detection



Overview

This system provides real-time monitoring and rapid ventilation during firefighting to prevent the accumulation of flammable gases and explosions. Smoke, heat, and gas detection systems are indispensable components of energy storage systems, crucial for mitigating the risk of thermal runaway events. Why. The purpose of Guidance on fire, combustible gas and toxic gas detection system development is intended to provide guidance on the development and maintenance of an effective and fit-for-purpose fire and gas detection system. They don't just contain fires - they prevent them through: 1. The Early Warning Squad Advanced cabinets now feature gas detection sensors that sniff out trouble before.

Energy storage cabinet combustible gas detection

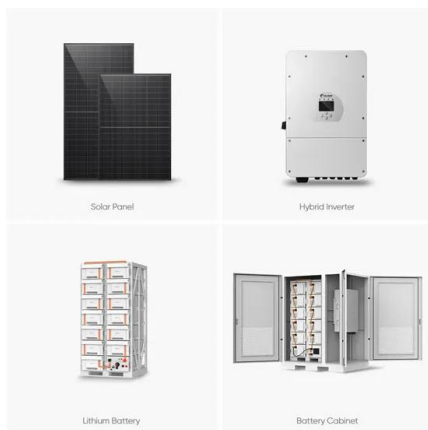


[Energy Storage Fire Cabinets: The Unsung Heroes of Battery Safety](#)

Advanced cabinets now feature gas detection sensors that sniff out trouble before temperatures rise. It's like having a bloodhound for volatile organic compounds.

Energy Storage Systems

Toxic gases, flammable vapors, or oxygen depletion can pose serious health risks or lead to catastrophic events. Gas detection systems provide early warning alerts, allowing personnel to ...



[Fire Protection for Lithium-ion Battery Energy Storage Systems](#)

All these facts add up to increased value in Siemens FDA smoke and lithium-ion off-gas detection technology providing 5 times faster detection for the safety of lithium-ion battery energy storage ...

[Fire Protection for Lithium-ion Battery Energy Storage Systems](#)

Aspirated smoke and off-gas detection systems
Lithium-ion battery cabinet protection
Siemens aspirated smoke and Off-Gas Particle detection
How does ASD "Off-Gas Particle" (OGP) detection work?
Venturi bypass

flowInsect filter Chamber flowDustIntelligent Classification of Airborne ParticlesAdvantages of using blue and infrared light scatteringEasy Installation and IntegrationLow Maintenance and Long Product LifecycleFeatures and BenefitsApplicationsAs its name implies - "aspirated" smoke and off-gas detection systems use an "aspirator" mounted in a detector unit. The detector connects to a sample pipe network mounted within the area or object being protected. Using the suction from the aspirator, air is continuously sampled and transported to the detection chamber for analysis for particles See more on assets.new.siemens solaxpower



SolaX C& I Storage Fire Strategy Elements

Explosion-Proof Ventilation System: When the system detects combustible gases exceeding the threshold, it uses explosion-proof fans to expel harmful gases, reducing the concentration of ...

[Multi-Level Fire Protection in Energy Storage Systems: PACK](#)

Cabinet-level fire suppression is essential for large-scale energy storage systems deployed in industrial parks, energy substations, and critical infrastructure facilities.



[Understanding "In Cabinet" combustible gas detection - Energy Risk](#)

An "in cabinet" gas detector, equipped with catalytic bead sensors, is installed inside this cabinet. If there's a leak from the tank or associated pipelines, the gas detector will detect the ...



[Guidance on fire, combustible gas and toxic gas](#)

[detection system](#)

The purpose of Guidance on fire, combustible gas and toxic gas detection system development is intended to provide guidance on the development and maintenance of an effective and fit-for ...



[Composite Fire Detector for Energy Storage](#)

The F503 is an energy storage multi-functional fire and gas detection instrument that can simultaneously detect five media: smoke, carbon monoxide, hydrogen, VOC, and temperature.



[SolaX C& I Storage Fire Strategy Elements](#)

Explosion-Proof Ventilation System: When the system detects combustible gases exceeding the threshold, it uses explosion-proof fans to expel harmful gases, reducing the concentration of ...

[Dyness Knowledge , Detailed explanation of Dyness DH200F energy ...](#)

Therefore, a comprehensive energy storage explosion venting and exhaust system is essential for routine maintenance and incident response. This system provides real-time monitoring ...



Contact Us

For catalog requests, pricing, or partnerships, please visit:
<https://www.xraydiamondsolutions.co.za>