

How big of an appliance can a 24v inverter support



Overview

Similarly, 24v and 48v systems generally support inverter sizes up to about 4000w. If your inverter size exceeds these practical limits: Reduce how many appliances uses at the same time. The need for an inverter size chart first became apparent when researching our DIY solar generator build. Solar generators range in size from small generators for short camping trips to. Surge is the maximum power that the inverter can supply, usually for only a short time (usually no longer than a second unless specified in the inverter's specifications). Some appliances, particularly those with electric motors, need a much higher start up surge than they do when running. Standard 12v models top out around 3000w (24v/48v ~ 4000w).

How big of an appliance can a 24v inverter support



[Pure Sine Wave Inverters: Sizing by Appliance](#)

Use pure sine wave inverters for all modern appliances, especially fridges, air cons, and induction cooktops. Size your inverter based on total running load + surge capacity.

[Inverter Size Calculator , Find Your Perfect Power Match](#)

The inverter size calculator takes the guesswork out of choosing the right inverter. Simply select your appliances below, and you'll instantly see the inverter size you need.



[What Size Inverter Do I Need? , Step-by-Step Guide & Appliance Chart](#)

When choosing an inverter, you'll need to calculate the continuous power in watts for all appliances you plan to run at the same time. Then, you must account for peak (surge) power - the short burst of ...

Inverter Size Calculator

WattBuild's calculator lets you list the devices you want to power and then tells you the key stats you need to know, as well as showing which products on the market are compatible. Use the Add Device ...

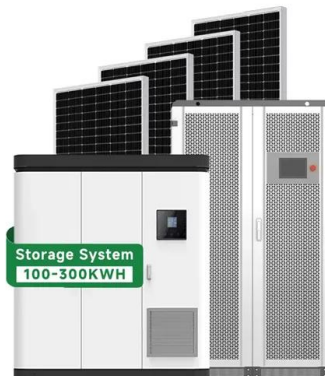


[Inverter Capacity Calculator](#)

The inverter capacity calculator helps you find the right inverter size for your home or office. It calculates how much power your devices need, how big the inverter should be, and what ...

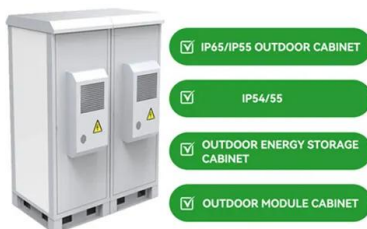
[What Size Inverter Do You Need for Your Home? Renogy US](#)

To calculate or determine what size inverter can meet your energy requirements, you need to calculate the total power of all the appliances you want to run with the inverter.



[What Size Inverter Do You Need? A Complete Guide for Home, RV](#)

Choosing the right inverter size is crucial--too small, and your appliances won't work; too large, and you'll waste money. This guide will help you determine the ideal inverter size for your ...



[? Appliances You Can and Cannot Use with an Inverter - A Guide](#)

At A& E Dunamis, we manufacture high-efficiency inverters designed to support a wide range of household and office appliances. In this guide, we'll help you understand which appliances ...



[The Only Inverter Size Chart You'll Ever Need](#)

We have created a comprehensive inverter size chart to help you select the correct inverter to power your appliances.

[What Size Inverter Do I Need?](#)

Finding the proper inverter size for your needs is as simple as adding together the necessary wattages of the items that you're looking to power.



Contact Us

For catalog requests, pricing, or partnerships, please visit:
<https://www.xraydiamondsolutions.co.za>