

How many kilowatt-hours of electricity does a 550-watt solar panel produce



Overview

A 550W solar panel generates 1.5 peak sun hours), varying by location tilt (20°-35° optimal), with 85% system efficiency accounting for inverter losses, shading, and temperature derating above 25°C (0.35 kWh per day (at 4-6 peak sun hours locations). 15 kWh. Most residential panels in 2025 are rated 250-550 watts, with 400-watt models becoming the new standard. However, the actual power output can vary based on several factors: Sunlight Exposure: The amount of direct sunlight the panel receives significantly affects its output. A 550W solar panel is a high-efficiency photovoltaic. Panel wattage is related to potential output over time; for example, a 400-watt solar panel could potentially generate 400 watt-hours of power in one hour of direct sunlight.

How many kilowatt-hours of electricity does a 550-watt solar panel



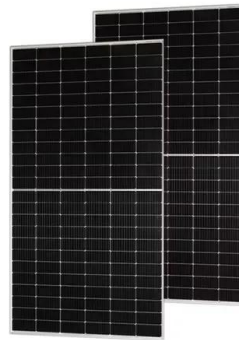
[How Much Power Does a 550 Watt Solar Panel Produce?](#)

On average, a 550 watt solar panel can produce between 2.2 to 3.3 kilowatt-hours (kWh) of electricity per day, depending on the number of peak sunlight hours and local weather conditions.

[How Much Energy Does a Solar Panel Produce?](#)

For example, a 400-watt solar panel produces 400 watts of power in an hour under perfect sunlight. If it gets 5 hours of full sun, it generates about 2 kilowatt-hours ($400W \times 5h = 2,000Wh$ or

...



[How Many kWh Does A Solar Panel Produce Per Day? Calculator](#)

To illustrate how many kWh different solar panel sizes produce per day, we have calculated the kWh output for locations that get 4, 5, or 6 peak sun hours. Here are all the results, gathered in a neat chart:

[How Many kWh Does a Solar Panel Produce?](#)

1 kilowatt (kW) is equal to 1,000 watts, just as 1,000 watt-hours (Wh) equal 1 kilowatt-hour (kWh). In addition to a host of variables, the amount of energy a solar panel can



[Solar Panel Output Calculator , Get Maximum Power Output](#)

Welcome to the Solar Panel Output Calculator! This tool is designed to help you estimate the daily, monthly, or yearly energy output of your solar panel system in kilowatt-hours (kWh).



[How Much Power Does a Solar Panel Produce? By Wattage, KW ...](#)

One crucial point is to remember to account for kilowatt-hours, or 1,000 watts of electricity used per hour. A few other important points that relate to this concept of energy utilization are ...



[How to Calculate Daily kWh from Your Solar Panels - EcoVault](#)

Daily kWh Production (300W, Texas) = $300W \times 4.92h \times 0.75 / 1000 = 1.11 \text{ kWh/Day}$. We can see that a 300W solar panel in Texas will produce a little more than 1 kWh every day (1.11 ...



How Much Energy Does A Solar Panel Produce?

If you're thinking about going solar, one of your biggest questions is likely: how much electricity can a solar panel actually produce? This in-depth guide breaks down the numbers, the ...



How Much Energy Does A Solar Panel Produce?

The actual solar panel's output depends on different factors like the orientation of your roof, weather, shading, time of year, and sun hours. So, let's explain each of those factors and see ...

How many kWh does a 550W solar panel produce

A 550W solar panel doesn't produce 550W continuously--its actual daily kWh depends on sunlight hours, weather, and system losses. On average, a well-installed 550W panel generates ...



Contact Us

For catalog requests, pricing, or partnerships, please visit:
<https://www.xraydiamondsolutions.co.za>