

How many megabytes does a 5G base station have



3.2v 280ah



How many megabytes does a 5G base station have



base station in 5g

A 5G base station, also known as a gNodeB (gNB), is a critical component of a 5G network infrastructure. It plays a central role in enabling wireless communication between user ...

5G Speed: How to Understand the Numbers

Because there are eight bits in every byte, to convert those 5G speeds into megabytes (MB) and gigabytes (GB), you have to divide them by eight. Many measurements are in these units ...



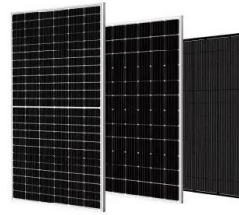
Size, weight, power, and heat affect 5G base station designs

For example, in dense urban areas, 5G networks will rely heavily on mmWave spectrum in massive MIMO antennas to deliver gigabit speeds. The higher the frequency, the shorter the ...



What is 5G base station architecture?

What are your power requirements? 5G base stations typically need more than twice the amount of power of a 4G base station. In 5G network planning, cellular operators have two options to ...



[Learn What a 5G Base Station Is and Why It's Important](#)

What Exactly is a 5G Base Station? In essence, a 5G base station is a very sophisticated cell tower that connects your device-terms like phones and IoT devices-to the much larger 5G network.

[Front Line Data Study about 5G Power Consumption](#)

The power consumption of a single 5G station is 2.5 to 3.5 times higher than that of a single 4G station. The main factor behind this increase in 5G power consumption is the high power usage of the active ...



[5G Base Station Architecture](#)

The Base Station cabinet is a single unit that includes both the RF functions and the baseband processing functions. The antenna subsystem connects with the antenna and includes the ...



What is 5G Base Station?

The coverage area of a 5G base station depends on several factors, including the transmit power, antenna gain, frequency band used, and the surrounding environment.



What is a 5G Base Station?

Central to this transformation are 5G base stations, the backbone of the next-generation network. These base stations are pivotal in delivering the high-speed, low-latency connectivity that ...

Contact Us

For catalog requests, pricing, or partnerships, please visit:
<https://www.xraydiamondsolutions.co.za>