

How many watts does a Skyworth photovoltaic panel have



Overview

When considering Skyworth photovoltaic panel power capacity, we're looking at equipment that typically delivers between 380W to 550W per panel. Skyworth helps you turn sunlight into long-term savings—cutting your electricity bills, adding value to your home, and giving you more control over your energy future. These black silicon modules combine high conversion rates with durable construction - think of them as the Swiss Army knives of solar solutions, equally. Skyworth PV developed full series solar modules including PERC cells and HJT high efficiency cells with different configuration to meet various project requirements. Our module power ranges from 215W to 540W, and the highest module efficiency reaches 21%. Monocrystalline solar panel for home system. 20 solar panels of 400 W are needed to power a house. Our product has an average lifespan of. Polycrystalline solar panels 450w size are a new generation cell that combines the high conversion efficiency and long life. However, you should always look.

How many watts does a Skyworth photovoltaic panel have



[How many watts does a solar photovoltaic panel have?](#)

Solar photovoltaic panels typically range from 250 to 400 watts, with some models reaching up to 500 watts. The actual output of a panel depends on various factors including its ...

[How many watts does Skyworth photovoltaic panel have](#)

A 400-watt solar panel can produce 400 watts of power under standard test conditions (STC). However, a 400W panel will rarely produce exactly 400 watts in real-world



Residential PV-SKYWORTH

Skyworth delivers high-efficiency solar panels, robust mounting systems, and trusted PV inverters--backed by local Skyworth EPC teams for smooth installation and reliable, long-term solar ...

[Skyworth photovoltaic panel models and dimensions](#)

As one of the leading 350 watt solar panel with ce certificate manufacturers and suppliers in China, we warmly welcome you to buy or wholesale 350 watt solar panel with ce certificate for



[How many watts does Skyworth s photovoltaic panels have](#)

Most home solar panels that installers offer in 2024 produce between 350 and 450 watts of power, based on thousands of quotes from the EnergySage Marketplace.Each of



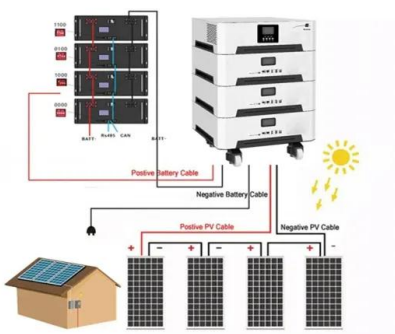
[How many watts does Skyworth photovoltaic panel have](#)

540 Watt Mono Solar Panels. Skyworth PV developed full series solar modules including PERC cells and HJT high efficiency cells with different configuration to meet various project ...



[Understanding Skyworth Photovoltaic Panel Power Output](#)

When considering Skyworth photovoltaic panel power capacity, we're looking at equipment that typically delivers between 380W to 550W per panel.



Solar Panels and Inverters

Skyworth PV developed full series solar modules including PERC cells and HJT high efficiency cells with different configuration to meet various project requirements. Our module power ranges from 215W to ...



How many watts does Skyworth s photovoltaic panels have

400-watt solar panels are photovoltaic (PV) panels that can generate up to 400 watts of instantaneous electrical energy under ideal Standard Test Conditions. Standard Test

Contact Us

For catalog requests, pricing, or partnerships, please visit:
<https://www.xraydiamondsolutions.co.za>