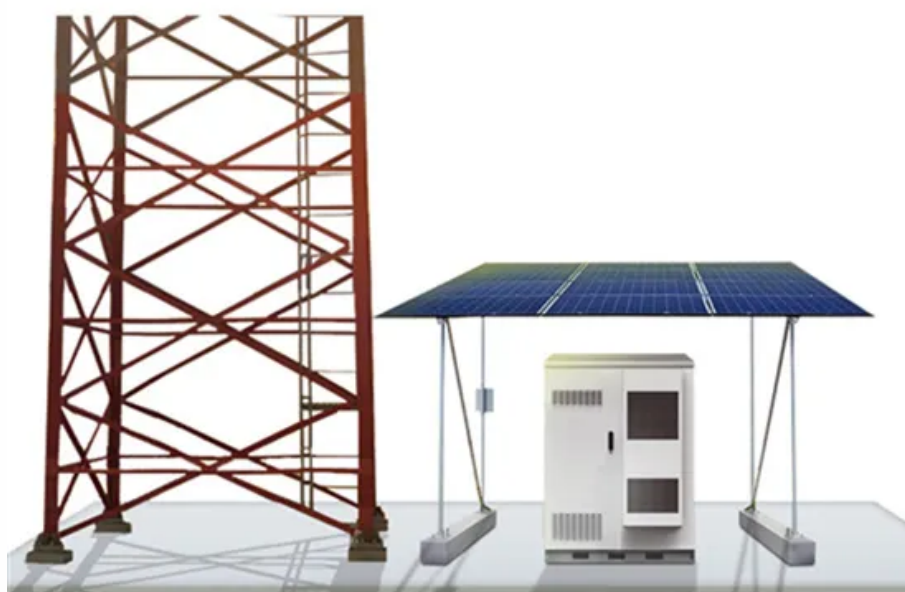


How to connect the base station to the battery line



Overview

Attach the power cables to the base stations, and then plug them each into a power outlet to turn them on. The status lights should be green. How do I connect my battery to my home WiFi network?

This article will help you connect your battery to your WiFi. This straightforward guide ensures that you effortlessly establish a secure connection, paving the way for a smooth experience. Note: If inline power (PoE) is provided, you do not need to connect the power adapter. Make sure the hub/switch is PoE-compliant.

How to connect the base station to the battery line



[Utilizing the Motoma base station battery in conjunction with the](#)

This straightforward guide ensures that you effortlessly establish a secure connection, paving the way for optimal compatibility and superior performance.

[battery setup :: Stationeers General Discussions](#)

Have the solar panels connect directly to your stationary battery using heavy cable. Then from the stationary battery output you can place APCs and transformers in the circuit.



[Yealink W56P & W56H Quick Start Guide_V81_10](#)

The base station should be used with Yealink original power adapter (5V/600mA) only. The use of the third-party power adapter may cause the damage to the base station.

[Installation and hardware , Base Help Center](#)

This article will help you connect your battery to your WiFi. It will also help you troubleshoot internet connectivity issues. How do I test my Base battery? This article explains how you can simulate a ...



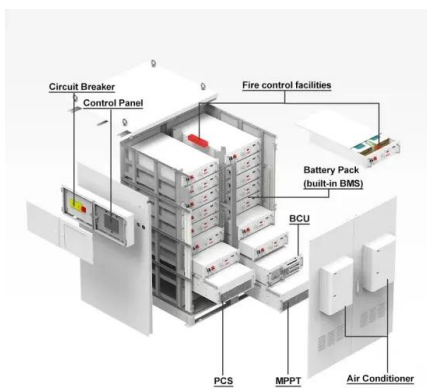
[Base Station Setup . PDF . Coaxial Cable . Battery Charger](#)



To ensure consistent power, connect the shared base station to a 12 volt battery, and then recharge the battery with a trickle charger plugged into the 110 volt power source.

Setting up a base unit

Get a LiFePO4 battery for the base station to keep that up and running for a while. Or put solar on it and let it self charge to keep it up and running longer.



Gigaset C385

⌘ First insert the battery cover at the top a. ⌘ Then press the cover b until it clicks into place. If you need to open the battery cover, for instance to replace the batteries, place your fingertip in the cavity on ...

[Installing the base stations](#)

Adjust the base stations so that the front panels are facing toward the center of the play area. Attach the power cables to the base stations, and then plug them each into a power outlet to turn them on. The ...



2MW / 5MWh
Customizable



[Battery as a primary power source in a base station setup](#)

You will need to limit both the voltage AND the current from the power supply to use it as a charger for the battery, and you will have to actively monitor the battery's voltage while it charges so ...

[How Do I Connect Steam Base Stations? A Step-by-Step Guide](#)

However, the process of connecting and setting up these base stations can be daunting for beginners. This step-by-step guide will walk you through the process, helping you seamlessly ...



Contact Us

For catalog requests, pricing, or partnerships, please visit:
<https://www.xraydiamondsolutions.co.za>