

Safe distance between solar battery cabinet compartments



Overview

According to NFPA 855, individual energy storage system units should generally be separated by at least three feet, unless the manufacturer has conducted large-scale fire testing (part of UL 9540A) to prove a smaller distance is safe. This prevents a fault in one unit from spreading. According to UL 9540, the separation between batteries should be 3ft (914mm). UL 9540 also provides that equipment evaluated to UL 9540A with a written report from a nationally recognized testing laboratory (NRTL), such as ETL, can be permitted to be installed with less than 3ft. Clearance refers to the empty space you must maintain around the battery cabinet. This space allows for adequate airflow, safe maintenance access, and separation from potential hazards. Always consult your manufacturer's installation manual first, as its requirements may exceed these general. Will the battery storage system be sited indoors or outdoors?

- Depending on the size of the battery and needs of the site, it is important to determine early on if the battery will be sited in the facility or outside of it. A location that is difficult to reach can make it challenging to perform routine checks or repairs.

Safe distance between solar battery cabinet compartments

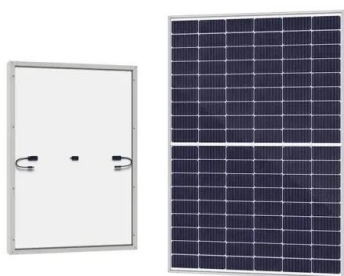


[City-Data Forum: Relocation, Moving, General and Local City ...](#)

City-Data forum All times are GMT -6. City-Data forum

[Finding the Perfect Home for Your Home Battery: Indoor vs. Outdoor](#)

Indoor placement often simplifies these connections. The shorter the distance between the battery, inverter, and electrical panel, the less energy is lost in transit. These losses, though often minimal, ...



[Crime rate in Camden, New Jersey \(NJ\): murders, rapes, robberies](#)

Camden, NJ New Jersey murders, rapes, robberies, assaults, burglaries, thefts, auto thefts, arson, law enforcement employees, police officers, crime map

EG4 BESS Spacing

The following document clarifies BESS (Battery Energy Storage System) spacing requirements for the EG4 WallMount batteries / rack mount six slot battery cabinet installations.



[Best Practices and Considerations for Siting Battery Storage ...](#)

o Depending on the size of the battery and needs of the site, it is important to determine early on if the battery will be sited in the facility or outside of it. o This decision may be impacted by any noise and ...



City-Data

Stats about all US cities - real estate, relocation info, crime, house prices, schools, races, income, photos, sex offenders, maps, education, weather, home value



[What is the recommended installation location for solar battery cabinets?](#)

Safety is of utmost importance when installing solar battery cabinets. Choose a location that is away from flammable materials, sources of ignition, and areas with high traffic.



[How safe is Historic Coronado District? \(Phoenix: apartments, loft](#)

Hi everyone, looking into buying a home in the neighborhood. I really fell in love with historic type homes, something about them just feels right.



[Is Ronkonkoma LiRR train station safe? \(Brookhaven, Islip: 2013, how](#)

We wonder how safe it is to commute from there? Are parking spaces relatively easy to get? Is it safe to leave your car there 10 hours or so and is



[Safe and Affordable Areas to Live in Fort Lauderdale for mid 20s ...](#)

Poinsettia Heights, Croissant Park, Shady Banks, River Oaks are neighborhoods within Fort Lauderdale North Andrews Gardens in Oakland Park Anywhere in Davie.



[Essential Requirements for Placing Energy Storage Batteries: A No](#)

The secret often lies in how and where you place those battery units. Whether you're setting up a home solar system or managing a commercial energy park, understanding placement ...



[safe to walk downtown denver from Union Station to 17th and ...](#)

Hi All, I am flying to Denver for a conference Sat Night in July. I plan on taking the train from Denver International Airport to Union Station in



[Where to keep solar batteries?](#)

Potential locations for storing solar batteries include garages, utility rooms, basements, and even custom-built cabinets. Each location comes with its own set of advantages and challenges.



[Crime rate in Wilmington, North Carolina \(NC\): murders, rapes](#)

Wilmington, NC North Carolina murders, rapes, robberies, assaults, burglaries, thefts, auto thefts, arson, law enforcement employees, police officers, crime map



[Solar Battery Installation Guide for Residential Projects: Finding the](#)

Learn how integrators choose the best location for residential solar batteries--garage, basement or outdoor enclosure--while meeting NFPA 855, EN 62619 & AS/NZS 5139 requirements.



- ✓ All in one
- ✓ 100~215kWh High-capacity
- ✓ Intelligent Integration

The Best Place to Put Solar Batteries

Keeping the distance between your solar panels and batteries short can minimize energy loss. Minimize Cable Length: The shorter the cable run between your panels and batteries, the less ...



What is the spacing requirement for energy storage cabinets?

Proper distance between cabinets not only ensures compliance with safety regulations but also allows for effective thermal management. This is crucial as energy storage systems ...

Overdoses increasing at NYC 'safe injection' sites or overdose

Overdoses at the 'safe injection' sites showing an increase. And when those overdoses are taken to the ER there is no follow up. Sounds like rinse



Checklist: Venting Clearance and Code Rules for Battery Cabinets

According to NFPA 855, individual energy storage system units should generally be separated by at least three feet, unless the manufacturer has conducted large-scale fire testing (part ...



[Top 100 least-safe cities \(highest city-data crime index\)](#)

Top 100 least-safe cities (highest city-data crime index) [Previous toplist](#) [Next toplist](#)



Contact Us

For catalog requests, pricing, or partnerships, please visit:
<https://www.xraydiamondsolutions.co.za>