

Solar Wind Turbine Generator Instructions



Overview

This manual provides detailed instructions for installation, operation, and maintenance, ensuring safe and optimal performance. ● Do not disassemble the equipment by yourself. Please contact the specified maintenance department when the. This product is designed to the highest technical specifications and standards. It will supply years of maintenance free use. If at any time you are unclear about this product, or. These manuals can help you quickly understand ECO-WORTHY's solar products, so you can quickly and easily build your own solar power system, whether it's off-grid or on-grid, home, RV or boat use. The complete kit contains: The solar panel is a set of solar photovoltaic modules that generate electricity based on sunlight. In addition to the standard braking and safety features, this wind turbine also includes an innovative aerodynamic braking tail mechanism, which forces the turbine to move away from the wind direction at high winds to reduce the speed rotation and.

Solar Wind Turbine Generator Instructions



[Downloads for ECO-WORTHY Solar Product Resources](#)

These manuals can help you quickly understand ECO-WORTHY's solar products, so you can quickly and easily build your own solar power system, whether it's off-grid or on-grid, home, RV or boat use.

400 Watt WIND TURBINE

ACCESSORIES INCLUDED Electrical Hazard PACKAGE CONTENTS Diagram Stop Switch PRECHECK INSTALLATION MAINTENANCE: WARRANTY RESTRICTIONS DISCLAIMER LIMITATION OF LIABILITY ACCESSOIRES INCLUS Directives importantes portant sur la sécurité CONTENU DE L'EMBALLAGE INTERRUPTEUR D'ARRÊT DE SERVICE VÉRIFICATION PRÉLIMINAIRE INSTALLATION Mise en garde : TOUTES LES BATTERIES DOIVENT ÊTRE DÉBRANCHÉES TOUT AUCalibres indiqués en AWG/ mm² ENTRETIEN : AVIS DE NON-RESPONSABILITÉ LIMITATION DE LA RESPONSABILITÉ ACCESORIOS INCLUIDOS Instrucciones importantes de seguridad Peligro Eléctrico CONTENIDOS DEL PAQUETE Diagrama el interruptor CC CONEXION A TIERRA VERIFICACIÓN PREVIA INSTALACIÓN PRECAUCIONES: PROCESO DE INSTALACIÓN MANTENIMIENTO: Garantía Restricciones Stop Switch: 50 amp DC stop switch. This is used to safely apply a brake to your turbine, during either periods of intense wind or general maintenance Plastic Disks: Anti static plastic components, that will prolong the life span of the turbine protecting from weather corrosion and static build up. Your Coleman Wind Turbine is designed with your pe See more on sunforce products ECO-WORTHY



Downloads for ECO-WORTHY Solar Product Resources

These manuals can help you quickly understand ECO-WORTHY's solar products, so you can quickly and easily build your own solar power system, whether it's off-grid or on-grid, home, RV or boat use.



[E-Series 5KW Wind Turbine Generator User's Manual , Manualzz](#)

It features a robust construction and advanced technology, making it suitable for both home and factory applications. This manual provides detailed instructions for installation, operation, and maintenance, ...

[VEVOR Wind Turbine Generator 400-Watt 12-Volt/AC Wind Turbine ...](#)

Safety Warning and the Attention Attention: For correct installation and use of this equipment, please read carefully the safety warning and attention and strictly follow the instructions. Basic ...



[VEVOR Wind Turbine Manual: Setup & User Guide](#)

With safety guidelines, product descriptions, and installation steps, this comprehensive manual provides everything you need to know to ensure the safe and efficient operation of your ...



[Wind Turbine Generator Owner's Manual , PDF](#)

It contains important safety instructions, technical specifications for different models of the turbine, instructions for assembly and installation, maintenance recommendations, an exploded view and ...

18650 3.7V
RECHARGEABLE BATTERY
Li-ion
2000mAh

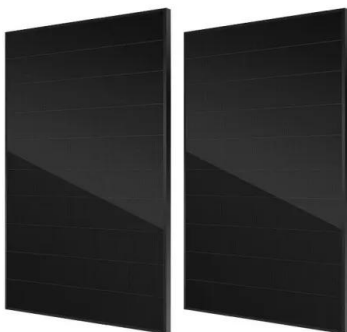
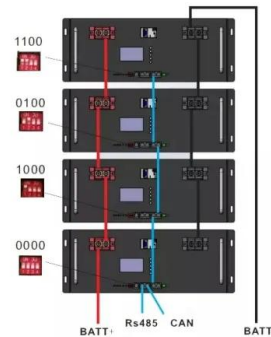


[Wind Turbine Generator WTD Series 1000W](#)

Instruction Manual CE / UKCA Dear Customer, Thank you very much for selecting this product. This manual contains important information regarding the installation and operation of your wind turbine.

400 Watt WIND TURBINE

1) Place this instruction manual in a safe place for reference. 2) Wait until a calm day to install or perform maintenance on your Turbine. 3) Listen to your Turbine should you hear any mechanical noise, ...



Missouri Wind and Solar

Ensure the tower is 30 feet higher than the nearest obstruction (trees, buildings) in a 200' radius. Doubling the tower height increases power output by 34% or more. Nearby structures, trees, ...

Wind Turbine Assembly

Watch the following video on how to assemble the Missouri Freedom wind turbines. Please note that Freedom wind turbines now only include one locking collar to prevent crimping on ...



[ECO-WORTHY 800W Solar Wind Power Kit User Manual](#)

Accessible in PDF format, it provides detailed instructions for harnessing solar and wind power efficiently. Maximize your energy generation capabilities with this versatile kit.

Contact Us

For catalog requests, pricing, or partnerships, please visit:
<https://www.xraydiamondsolutions.co.za>