

Solar thermal power generation start and stop mode



Overview

In simple words, these procedures are step-by-step methods followed by operators to start or stop a thermal power plant safely. They maintain system stability, protect equipment from thermal stresses, and ensure smooth functioning without accidents or failures. Solar thermal-electric power systems collect and concentrate sunlight to produce the high temperatures needed to generate electricity. In most. Photo thermal power generation, as a renewable energy technology, has broad development prospects.

Solar thermal power generation start and stop mode



Concentrated solar power

With a daily start-up and shut-down high demands are placed on CSP-plants. Our power generation equipment and instrumentations and controls enable plant operators to make highest efficient use of ...

Solar thermal power plant

Solar thermal power plants are electricity generation plants that utilize energy from the Sun to heat a fluid to a high temperature. This fluid then transfers its heat to water, which then becomes ...



[How Solar Thermal Power Works](#)

There are two main ways of generating energy from the sun. Photovoltaic (PV) and concentrating solar thermal (CST), also known as concentrating solar power (CSP) technologies. PV converts sunlight ...

[Solar thermal power generation principle and diagram](#)

Here in this article, we will discuss about solar energy definition, block diagram, characteristics, working principle of solar energy, generation, and distribution of solar energy, advantages, disadvantages, ...



[Self-operation and low-carbon scheduling optimization of solar thermal](#)

Therefore, this study explains the structure of a solar thermal power plant with a thermal storage system and analyzes its main energy flow modes to establish a self-operation and low ...

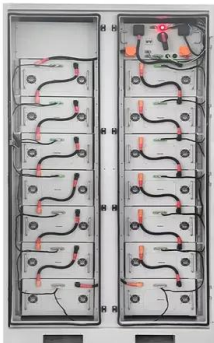


Solar Thermal Power Plant

There are three primary solar thermal technologies based on three ways of concentrating solar energy: solar parabolic trough plants, solar tower power plants, and solar dish power plants.



To Strive forward No Energy Waste



- ✓ All in one
- ✓ 100~215kWh High-capacity
- ✓ Intelligent Integration

[What is start-up and shutdown procedure of thermal plants?](#)

The start-up and shutdown procedures of thermal power plants are critical for safe, efficient, and reliable operation. Start-up involves gradual heating, pressurization, and ...

How Does Solar Work?

Below, you can find resources and information on the basics of solar radiation, photovoltaic and concentrating solar-thermal power technologies, electrical grid systems integration, and the non ...



Sample Order
UL/KC/CB/UN38.3/UL



[Solar explained Solar thermal power plants](#)

The steam is converted into mechanical energy in a turbine, which powers a generator to produce electricity. Solar thermal power systems have tracking systems that keep sunlight focused ...

Contact Us

For catalog requests, pricing, or partnerships, please visit:
<https://www.xraydiamondsolutions.co.za>