

# The weight of the thinnest photovoltaic panel



## Overview

---

In general, a 60 cell residential solar panel weighs between 35lbs and 50 lbs (16-22 kg) and can produce between 300 and 400 watts of power. This weight makes them manageable, but still requires careful lifting during installation. Why is knowing the photovoltaic panels weight so important before installation?

This weight is. Roof Load Capacity is Rarely a Limiting Factor: Solar panels add only 3-4 pounds per square foot to roof load, well within the 20+ pound capacity of most residential roofs. However, the exact dimensions depend heavily on the panel's technology, wattage, and the manufacturer's design. Once panels are mounted, the weight spreads evenly across the roof, adding about 2.5 to 3 pounds per square foot.

## The weight of the thinnest photovoltaic panel

---

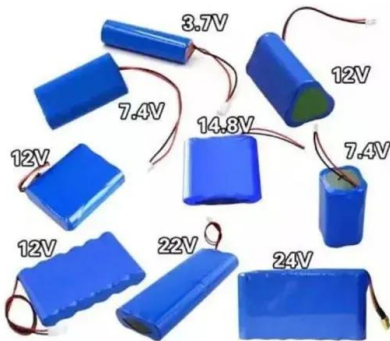


### [How Big Are Solar Panels? Solar Panel Size and Weight](#)

In this blog, we'll explain the typical size and weight of solar panels used for homes, businesses, and farms. By the end, you'll have a clear picture of what to expect when planning a ...

### [How Much Do Solar Panels Weigh?](#)

On average, solar panels weigh around 40 to 50 pounds per panel, and while this does add some weight to your roof, it's usually not enough to cause any issues for most residential roofs.



### [Solar Panel Dimensions and Weight: Everything You Need to Know!](#)

For example, a standard size polycrystalline solar panel typically weighs about 18 to 20 kg (40 to 44 lbs), while a monocrystalline solar panel may be slightly lighter at about 16 to 18 kg (35 ...

### [Solar Panel Weight Guide - Solar Generation USA](#)

A typical residential solar installation with about 15-20 panels can weigh 300 to 450 kilograms (660 to 990 pounds) in total, which adds approximately 10 to 20 kilograms per square meter (2 to 4 pounds ...



### [How Much Do Solar Panels Weigh? A Complete Guide To Solar Panels Weight](#)

In general, a 60 cell residential solar panel weighs between 35lbs and 50 lbs (16-22 kg) and can produce between 300 and 400 watts of power. However, a 36 cell flexible (thin-film) solar ...

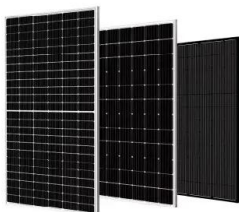
### [The Ultimate Guide to Solar Panel Size, Weight & Wattage \(2025\)](#)

Find the exact solar panel size & weight in our 2025 guide. Our complete chart compares models by ft/cm and lbs/kg to help you plan your installation.



### [How Much Do Solar Panels Weigh? 1.30 - 2,608.7 lbs Chart](#)

All individual solar panels weigh less than 100 lbs. However, solar systems with 8kW rated capacity and above add more than 1,000 lbs to your roof. Not to worry, however.



### [Solar Panels Size & Weight \(Including Commercial Dimensions\)](#)

Thin film solar panels are lightweight and flexible, and while they offer the lowest efficiency of the three (6 to 15%), they are great for certain installations where the roof may not be ...



### [Solar Panel Size & Dimensions Guide 2025, Complete Specs](#)

In this comprehensive guide, you'll learn everything you need to know about solar panel sizing, from standard dimensions to weight considerations, helping you determine the perfect solar ...



### [average photovoltaic solar panel weight guide](#)

As the solar industry matures, manufacturers are heavily focused on reducing the photovoltaic solar panel weight without sacrificing durability or efficiency. This push for lightweight ...



## Contact Us

For catalog requests, pricing, or partnerships, please visit:  
<https://www.xraydiamondsolutions.co.za>