

# US Data Center Rack 25kW Inquiry



## US Data Center Rack 25kW Inquiry

---



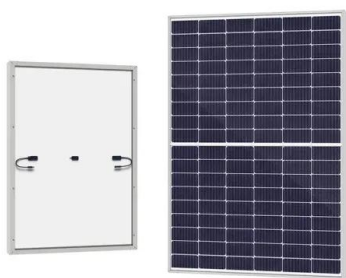
 LFP 48V 100Ah

### [Data Center Rack Power Costs: A Condensed Analysis , Nlyte](#)

While a standard rack uses 7-10 kW, an AI-capable rack can demand 30 kW to over 100 kW, with an average of 60 kW+ in dedicated AI facilities. This article provides a condensed analysis ...

### [Modular Data Center, Self-Cooling, 4x 44U Racks, 2x 25 kW AC](#)

Dual cooling enclosures come with slim 25 kW in-row cooling units (SRCOOLDXRW25) to help prevent equipment malfunctions due to overheating or fluctuating temperatures. Together, the IT rack ...



### [SmartRack Pre-Configured, Self-Cooling Modular Data Center](#)

The cooling enclosure comes with a slim 25 kW in-row cooling unit (SRCOOLDXRW25) to help prevent equipment malfunctions due to overheating or fluctuating temperatures. Together, the IT rack ...

### [kW per Rack Explained: Optimize Colocation Power & Costs](#)

Optimizing kW per rack can lower costs, improve sustainability, and ensure reliable performance. This guide explains why kW/rack matters, how to calculate it, and best practices for ...



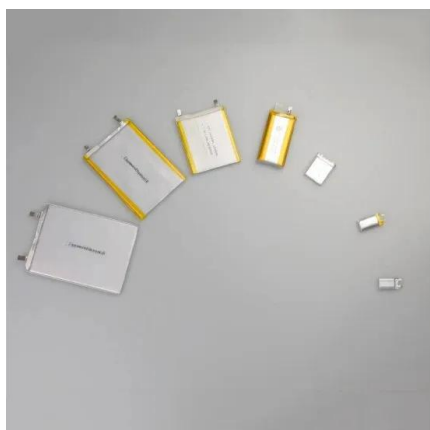
[Best Practices for Data Center Area Sizing Per Rack Based on Power](#)

One of the most critical aspects of this design is area sizing per rack, which directly impacts efficiency, scalability, cooling performance, and operational safety.



[Eaton Tripp Lite SRP-4R-2C25 SmartRack Modular Data Center, 4x ...](#)

Dual cooling enclosures come with slim 25 kW in-row cooling units (SRCOOLDXRW25) to help prevent equipment malfunctions due to overheating or fluctuating temperatures. Together, the IT rack ...



[Eaton SRP-2R-C25 Modular Data Center, 2x 44U Racks, 25 kW ...](#)

Eaton SRP-2R-C25 SmartRack Modular Data Center with 2x 44U racks and a 25 kW in-row cooling unit. Ideal for edge, AI, and industrial data environments.

[Modular Data Center, Self-Cooling, 44U Rack, 25 kW AC , Eaton](#)

The SRP-R-C25's IT rack enclosure houses up to 44U of rack-mounted equipment on built-in rails. The cooling enclosure comes with a slim 25 kW in-row cooling unit (SRCOOLDXRW25) to help prevent ...



[Eaton SmartRack Pre-Configured, Self-Cooling Modular Data Center](#)

The Eaton 5P series, for instance, is designed for use in small and medium-sized businesses, while the Eaton 9PX series is ideal for use in data centers and critical infrastructure applications.

[Eaton SmartRack Pre-Configured, Self-Cooling ...](#)

Buy a Eaton SmartRack Pre-Configured, Self-Cooling Modular Data Center - 2x 44U Racks, 25 kW AC Unit or other UPS Battery Backups at CDW



## Contact Us

---

For catalog requests, pricing, or partnerships, please visit:  
<https://www.xraydiamondsolutions.co.za>