

What to do if there are burn marks on photovoltaic panels



Overview

Regularly check the surface of PV modules for dust, bird droppings, or obstructions, and clean them if necessary. Use an infrared thermal imaging camera to detect local overheating (hot spots). Yet one issue that can undermine that expectation is the appearance of solar panel burn marks. In this detailed guide on Solar Panel Burn Marks Damage Assessment and Repair Options, we'll explore the causes, severity, diagnosis, and potential solutions for burn marks on your panels. Whether you're. Scroll to the bottom of any page to find a sun or moon icon to turn dark mode on or off! Burn spot on panel. Loose connections: Loose connections can cause a decrease. The burn marks appear in a typical brownish-black discoloration.

What to do if there are burn marks on photovoltaic panels



[Common Fault Diagnosis and Maintenance Guide for PV Systems ...](#)

Use an infrared thermal imaging camera to detect local overheating (hot spots). Replace damaged modules if detected. Inspect modules for physical damage, such as glass cracks or frame ...

[Identifying Issues On Installed PV Systems: A Thermal Imaging Guide ...](#)

There are certain elements that need to be taken into consideration when conducting the thermal scan on the installed photovoltaic (PV) system. The use of the thermal imagery with the ...

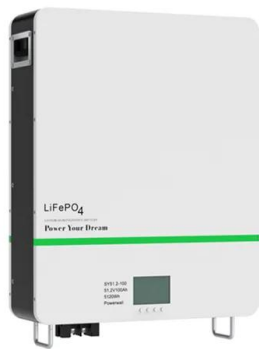
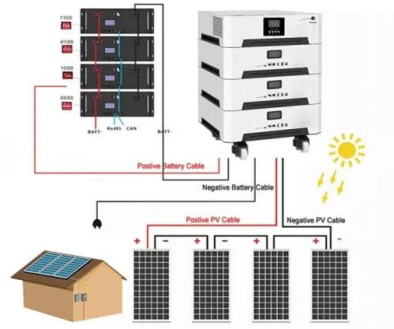


[Solar Panel Burn Marks Explained](#)

Burn marks on solar panels signal electrical failure, hotspots, or wiring issues. Learn the causes, dangers, and how to fix burned solar panels safely.

[Solar Panel Burn Marks Damage Assessment and Repair Options](#)

In this detailed guide on Solar Panel Burn Marks Damage Assessment and Repair Options, we'll explore the causes, severity, diagnosis, and potential solutions for burn marks on your ...



[Error pattern: burn marks on the front of the module](#)

You can find suitable replacement modules on the SecondSol online marketplace. However, the system operator can check beforehand whether the module is shaded and the burn mark is the result. If this ...

[10 Most Common Solar Panel Repairs](#)

Extremely hot days can further reduce the efficiency of a solar cell. If you notice any cracks, mismatches, or poorly soldered joints on your solar panels, be sure to get them fixed ...

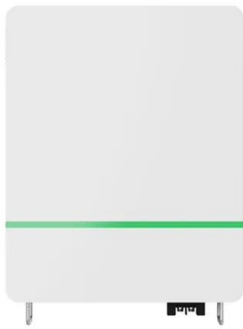


[Most Common Solar Panel Defects and How to Avoid Them](#)

Solar panels are an excellent investment, but like any technology they aren't immune to defects. In this blog, we will explore the 10 most common solar panel defects from micro-cracks and ...

[Top 10 Signs of Solar Panel Degradation , NAZ Solar Electric](#)

Burn marks: If you notice burn marks on your solar panels, it could be a sign of degradation. Burn marks can be caused by hot spots or other issues with your panels.



Burn spot on panel.

Some panels may have diodes with amperage rating and thermal path able to handle it, others don't and prohibit use where bypass diodes activate in full sun. Try to figure out how it ...

GRADE A BATTERY

LiFePO4 battery will not burn when overcharged, over discharged, overcurrent or short circuited and can withstand high temperatures without decomposition.



[How to deal with short circuit and burn marks on photovoltaic panels](#)

The majority of PV plant fire accidents are caused by DC arcing. Fortunately, you can protect your home and your family from this deadly threat with an Arc Fault Circuit Interrupter (AFCI), which



Contact Us

For catalog requests, pricing, or partnerships, please visit:
<https://www.xraydiamondsolutions.co.za>