

**Which battery cabinet should be connected first the positive pole or the negative pole**

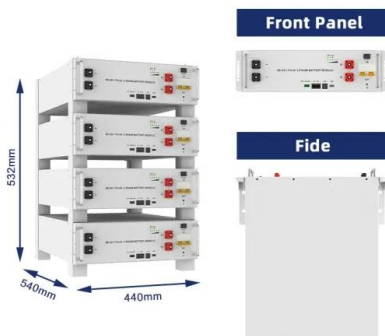


## Overview

---

The standard procedure is to connect the positive terminal first, followed by the negative terminal. This method helps prevent sparks and potential short circuits when removing or connecting batteries. Here, we discuss why it's better to disconnect the negative first and how best to do it for safety and convenience. Below is a detailed explanation.

## Which battery cabinet should be connected first the positive pole or



### [Battery replacement question. , Volvo V40 Forums](#)

The main battery is the one to look at. The secondary battery is only connected to the car by a relay for a fraction of a second during an engine restart from a stop/start event, when it momentarily takes ...

### [Which Battery Terminal Do You Connect First?](#)

Always connect the positive (+) terminal first and disconnect the negative (-) terminal first when removing the battery. This sequence helps prevent electrical hazards, short circuits, and ...



### [The Right Way to Connect a Battery: Terminal Order Explained](#)

Identifying the positive and negative terminals of a battery is fundamental. Typically, the positive terminal is marked with a "+" sign or is colored red, while the negative terminal is marked ...

### [Do you connect positive or negative first when replacing a battery?](#)

Connect the positive terminal first when installing a battery, and remove the negative terminal first when taking one out. This order minimizes the risk of short circuits and sparks, ...



### [Which Battery Terminal to Disconnect First?](#)

And for this process, it's important to know which battery terminal to disconnect first: the negative terminal. Here, we discuss why it's better to disconnect the negative first and how best to do it for ...

### [The Right Way to Connect Your Car Battery: Terminal Order and Best](#)

When you're connecting a battery, always start with the positive terminal. This means you'll connect the positive cable first. After that, connect the negative cable to the negative terminal. This order helps ...



### **Main Battery Replacement**

Since that battery also supplies power to the ECU memory when the car is switched off, as well as powering the stop/start system, don't ignore it. Like the main battery, Volvo recommend that it be a ...

### Which Battery Terminal Should Be Connected First: Positive or Negative?

Always remember to connect the positive terminal first and the negative terminal second to ensure the proper flow of current and maintain the integrity of the battery and surrounding electrical systems.



### Which car Battery Terminal to Connect & Disconnect First?

Discerning the correct order between positive and negative first when connecting a battery can be confusing without a proper guide. So, here's the answer - connect the positive terminal first when ...

### Do I Hook Up Positive or Negative Battery Terminal First? Essential

To ensure safety when connecting battery terminals, always connect the positive terminal first, followed by the negative terminal. This practice helps prevent sparks and potential short circuits.



 LFP 48V 100Ah

### Low Battery warning , Volvo V40 Forums

Battery is easy to do yourself if you're at all handy around a screw driver and a spanner, just remember to reset the battery management system before you start using the car or it'll kill the lifespan of ...

## Secondary Battery

My main battery just died, had it replaced with same, and car kept giving me Battery charging, so no stop start. When stop/start worked, it was for about 10 sec, and car would start, with battery charging ...



### DETAILS AND PACKAGING



1 USER MANUAL PDF 2 RJ45 Cable For RS485/CAN 3 Battery in Parallel Cables  
4 RJ45 TO USB Monitor Cable 5 M8 Terminal\*4

### [Which car Battery Terminal to Connect & Disconnect First?](#)

Which Car Battery Terminal to Connect, Positive Or Negative First? Which Car Battery Terminal to Remove, Positive Or Negative First? FAQs Final Words Discerning the correct order between positive and negative first when connecting a battery can be confusing without a proper guide. So, here's the answer - connect the positive terminal first when connecting a battery before the negative terminal. The BIG QUESTION is - why connect the positive terminal first? It is simply due to the safety it p... See more on rxmechanic

### Videos of Which Battery Cabinet Should Be Connected First, The Posi...

Watch video 7:39 WHICH TO CONNECT FIRST on the car battery and disconnect first, POSITIVE? OR NEGATIVE MUST SEE!!!! Automotive electronics from schematics by Joseph 6.5K views Watch video 0:23 Do You Disconnect & Connect Positive Or Negative Terminal First On A Battery? ;- ) How To DIY Moore 4.6K views Watch video 0:54 Which Terminal to Connect First When Installing a Car Battery More Automotive 1.8K views Watch full video pluginhighway.ca

### Which Battery Terminal Should Be Connected First: Positive or

...

Always remember to connect the positive

terminal first and the negative terminal second to ensure the proper flow of current and maintain the integrity of the battery and surrounding electrical systems.

### [Battery Recycling for Businesses](#)

Battery Recycling for Businesses Use the chart below to determine how to handle used batteries generated by your business. Batteries that are considered hazardous must be recycled or managed by your business as ...



### [Low battery charge error , Volvo V40 Forums](#)

Hello everyone, I just bought my first car, a 2014 Volvo V40 T3, and a warning appears on the dashboard that says 'low battery charge.' The car is recently

### [Household Battery Recycling](#)

Household battery recycling locations Lead-acid batteries, or "automotive type batteries," are banned from disposal. Consumers may bring lead-acid batteries to any Wisconsin retailer that sells these batteries for ...



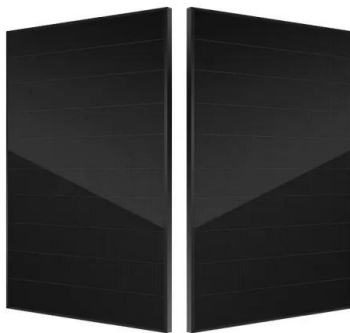
### [What Battery Terminal Should Be Connected First](#)

When installing a car battery, connecting the positive terminal first is crucial for both safety and electrical system integrity. This sequence prevents accidental short circuits that could ...



### Main Battery Change

Going to change the service battery in my 15 V40cc D2. Anything I need to be ware of or look out for ??



### [When Installing a Car Battery: Which Terminal First for Safe](#)

When installing a new car battery, it's crucial to connect the terminals in the proper order to avoid any electrical mishaps. We often get asked about the correct sequence: do you connect the ...

### [Main battery dealership quotes uk](#)

Has anyone here had their v40 main battery replaced by the dealer or any other workshop, if so how much was it (uk)



51.2V 300AH

## Contact Us

---

For catalog requests, pricing, or partnerships, please visit:  
<https://www.xraydiamondsolutions.co.za>